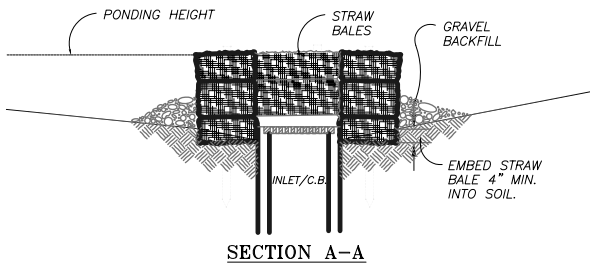
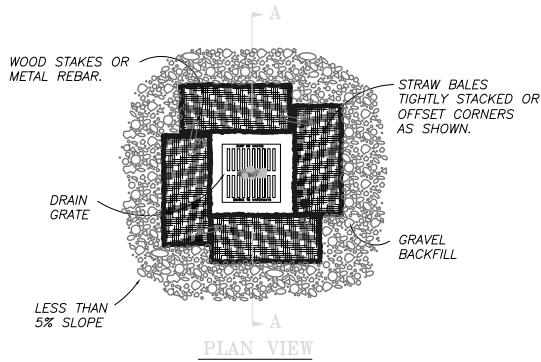


## STRAW BALE/GRAVEL DROP INLET SEDIMENT BARRIER

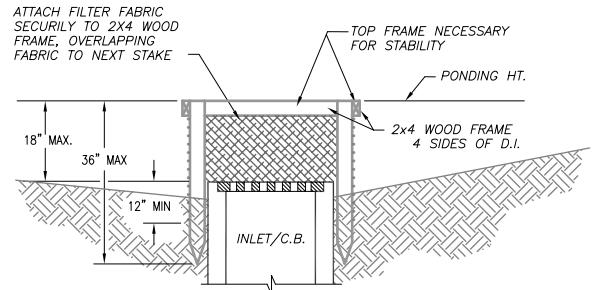
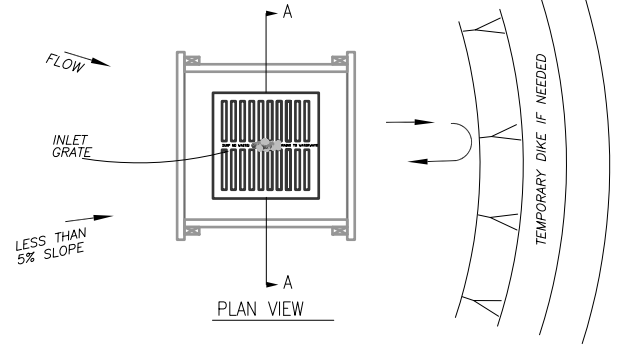


NOTES: 1. DROP INLET SEDIMENT BARRIERS ARE TO BE USED FOR SMALL, NEARLY LEVEL DRAINAGE AREAS. (LESS THAN 5 %) 2. EMBED THE BALES 4\"/>

STRAW BALE SEDIMENT BARRIERS (CATCH BASINS) STRAW BALE BARRIERS SHALL BE INSPECTED WEEKLY AND AFTER EACH SIGNIFICANT STORM (1-IN. IN 24-HR.). DAMAGE TO THE BALES OR GAPS THAT HAVE DEVELOPED BETWEEN BALES SHALL BE REPAIRED OR REMEDIATED IMMEDIATELY. THE STRAW BALE BARRIERS SHALL BE ADJUSTED AS EACH SUCCESSIVE LAYER OF PAVEMENT IS INSTALLED. SEDIMENT AROUND BALES SHALL BE REMOVED WHEN IT REACHES A DEPTH OF 6-IN. REMOVED SEDIMENT SHALL BE PLACED AT A LOCATION THAT WILL NOT ERODE FROM THE SITE. STRAW BALES MAY BE REMOVED WHEN UPSLOPE AREAS HAVE BEEN STABILIZED.

5.19.03

## SILT FENCE DROP INLET SEDIMENT BARRIER

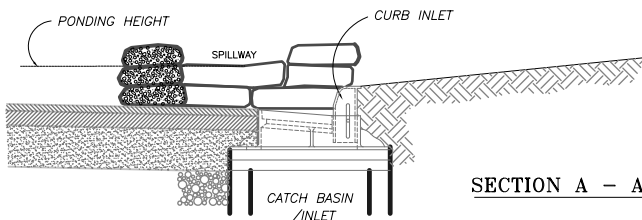
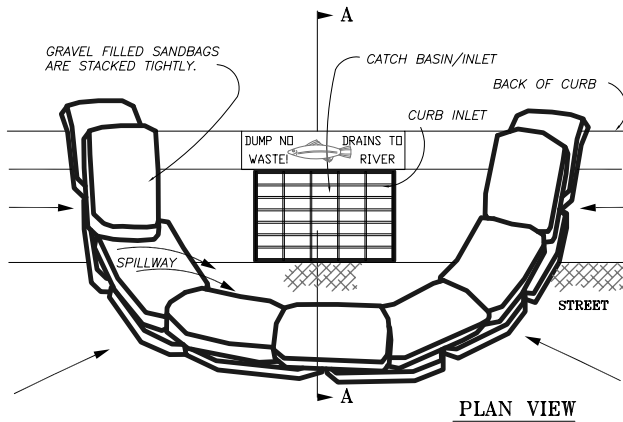


NOTES: 1. DROP INLET SEDIMENT BARRIERS ARE TO BE USED FOR SMALL, NEARLY LEVEL DRAINAGE AREAS. (LESS THAN 5%) 2. USE 2x4 WOOD OR EQUIVALENT METAL STAKES, (3 FT. MIN. LENGTH) 3. INSTALL 2x4 WOOD TOP FRAME TO INSURE STABILITY.

4. THE TOP OF THE FRAME (PONDING HEIGHT) MUST BE WELL BELOW THE GROUND ELEVATION DOWNSLOPE TO PREVENT RUNOFF FROM BY-PASSING THE INLET. A TEMPORARY DIKE MAY BE NECESSARY ON THE DOWNSLOPE SIDE OF THE STRUCTURE.

5.19.03

## CURB INLET SEDIMENT BARRIER

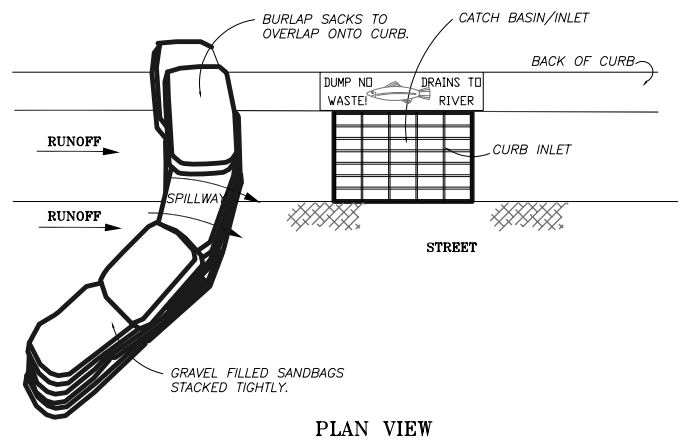


NOTES: 1. PLACE CURB TYPE SEDIMENT BARRIERS ON GENTLY SLOPING STREET SEGMENTS, WHERE WATER CAN POND AND ALLOW SEDIMENT TO SEPARATE FROM RUNOFF. 2. SANDBAGS, OF EITHER BURLAP OR WOVEN GEOTEXTILE FABRIC, ARE FILLED WITH GRAVEL, LAYERED AND PACKED TIGHTLY.

3. LEAVE ONE SANDBAG GAP IN THE TOP ROW TO PROVIDE A SPILLWAY FOR OVERFLOW. 4. INSPECT BARRIERS AND REMOVE SEDIMENT AFTER EACH STORM EVENT. SEDIMENT AND GRAVEL MUST BE REMOVED FROM THE TRAVELED WAY IMMEDIATELY.

5.19.03

## CURB INLET SEDIMENT BARRIER



NOTES: 1. PLACE CURB TYPE SEDIMENT BARRIERS ON GENTLY SLOPING STREET SEGMENTS, WHERE WATER CAN POND AND ALLOW SEDIMENT TO SEPARATE FROM RUNOFF. 2. SANDBAGS OF EITHER BURLAP OR WOVEN \"GEOTEXTILE\" FABRIC, ARE FILLED WITH GRAVEL LAYERED AND PACKED TIGHTLY. 3. LEAVE A ONE SANDBAG GAP IN THE TOP ROW TO PROVIDE A SPILLWAY FOR OVERFLOW. 4. INSPECT BARRIERS AND REMOVE SEDIMENT AFTER EACH STORM EVENT. SEDIMENT AND GRAVEL MUST BE REMOVED FROM THE TRAVELED WAY IMMEDIATELY.

5.19.03