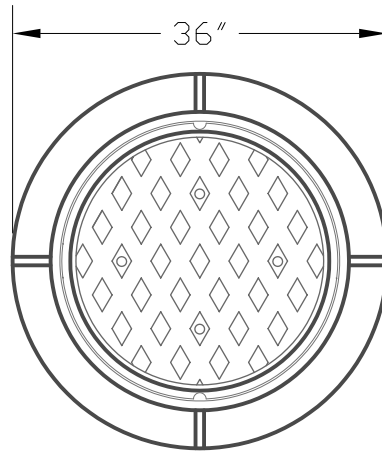
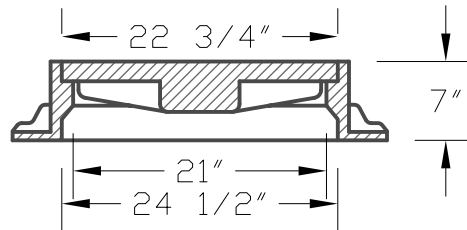


MANHOLE FRAME & COVER



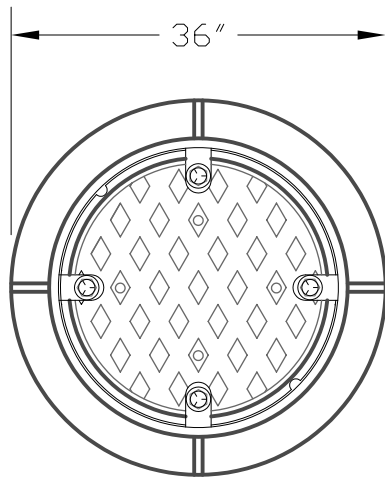
MH FRAME & COVER

NEENAH FOUNDRY MODEL R-1772-C
 EAST JORDAN IRON WORKS MODEL 1022
 MANHOLE FRAME WITH SOLID LID OR
 EQUAL.



MH FRAME & COVER

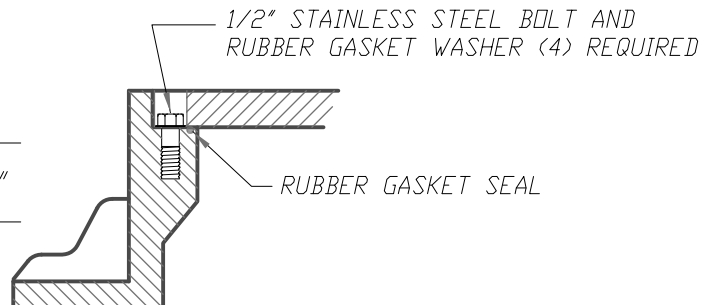
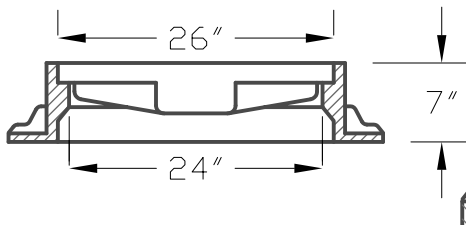
N.T.S.



MANHOLE FRAME W/BOLTED LID

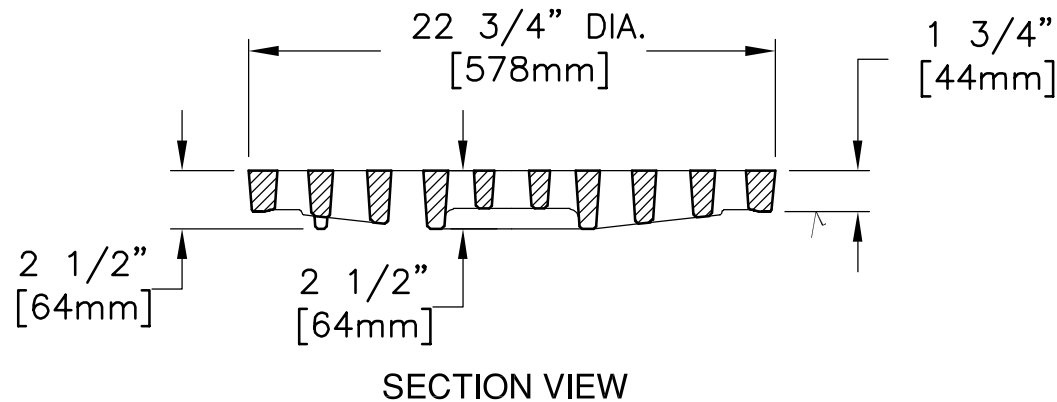
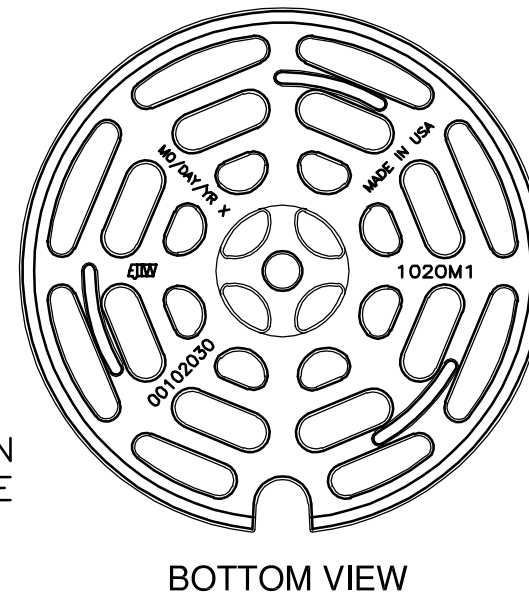
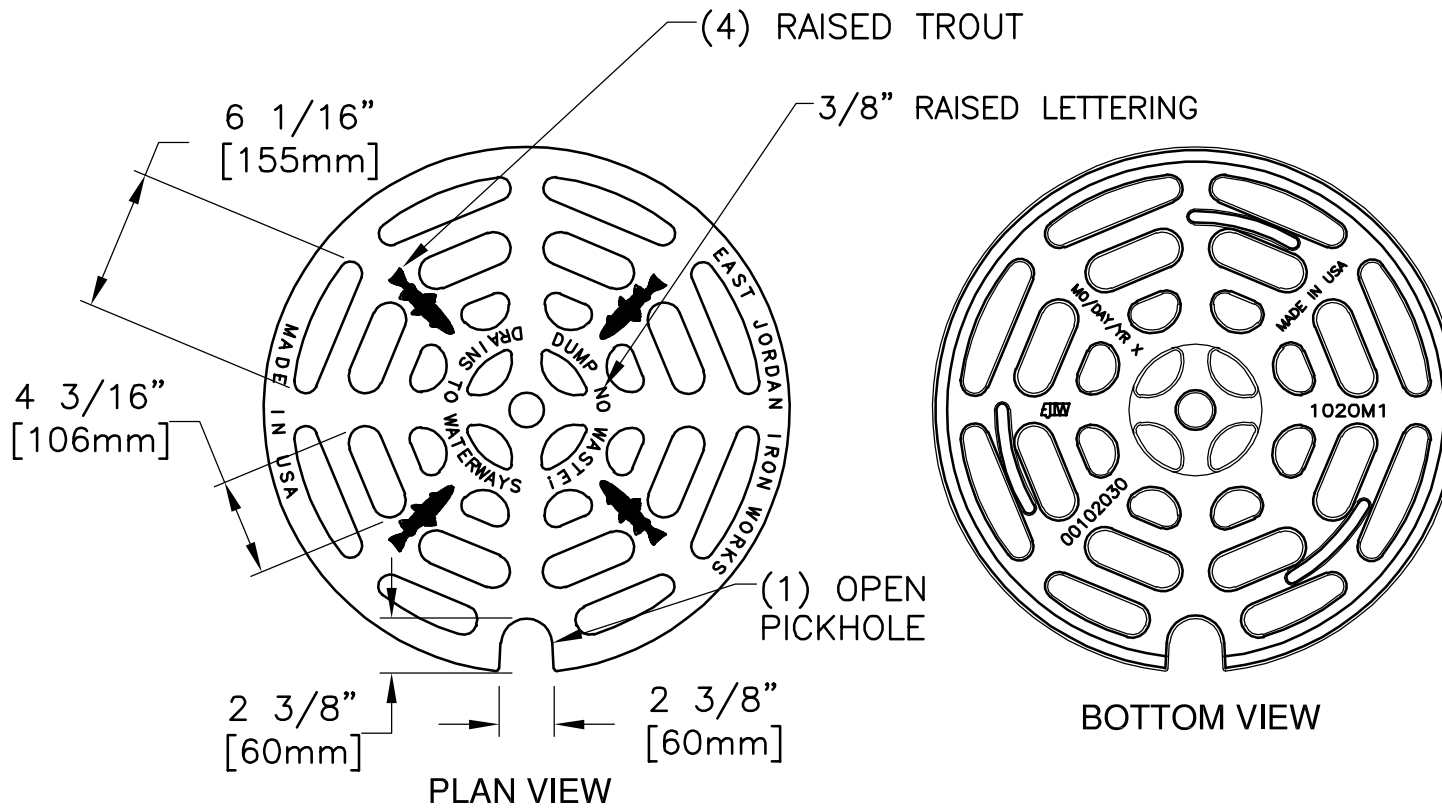
CASTING TYPE R-1916-F NEENAH
 CASTING TYPE 1022-1 EAST JORDAN

WATERTIGHT MANHOLE FRAME WITH
 BOLT DOWN SOLID LID OR EQUAL.



BOLT DOWN LID

N.T.S.



EAST JORDAN
IRON WORKS, INC.
P.O. BOX 439
EAST JORDAN, MI. 49727
1-800-874-4100
FAX 231-536-4458

DRAWN TCL	DATE 01/31/05
APPROVED	DATE

CATCH BASIN GRATE

PRODUCT NO.
00102030
DIPPED

CATALOG NO.
1020M1

REF. PRODUCT DRAWING
102031

EST. WT.
GRATE: 124LBS 56kg

OPEN AREA
120 SQ. INCHES
(774 SQ. cm)

MAT'L SPEC.
GRATE - GRAY IRON
ASTM A48 CL35B

LOAD RATING
HEAVY
DUTY