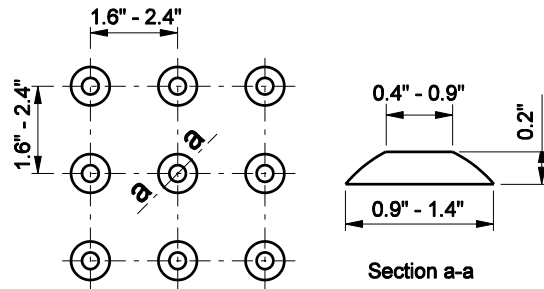
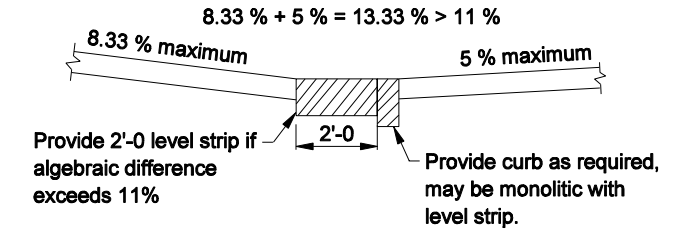


GENERAL NOTES :

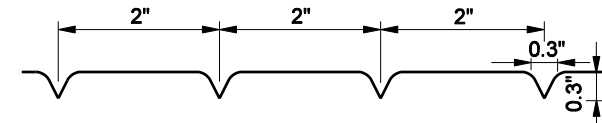
- 1 These dimensions are based on a 6 in. curb height. They shall be proportionally adjusted for other curb heights.
- 2 Where site infeasibility precludes construction to the width shown, such width may be decreased to a minimum of 3'-0.
- 3 The bottom edge of the curb ramp shall be flush with the edge of adjacent pavement and gutter line.
- 4 Landing areas at the top of curb ramps shall have maximum cross slope of 50 : 1 in any direction. When site infeasibility precludes a landing slope of 50 : 1 in any direction, the slope perpendicular to the curb face shall not exceed 50 : 1.
- 5 If site infeasibility precludes construction to the width shown, the landing width may be decreased to 3'-0 minimum. The running slope of the curb ramp may be steepened to a maximum of 10 : 1 for a maximum 6 in. rise.
- 6 Drainage inlets should be located uphill from curb ramps to prevent puddles at the path of travel.
- 7 See Standard Drawing E 604-SWCR-12 for improved access on narrow sidewalks.
- 8 Algebraic difference in grade between the base of curb ramp and the gutter shall be limited to less than 11%. If it is not practical, a 2'-0 wide level strip shall be provided. See detail sketch.
- 9 Minimum recommended width of curb ramp is 4'-0.



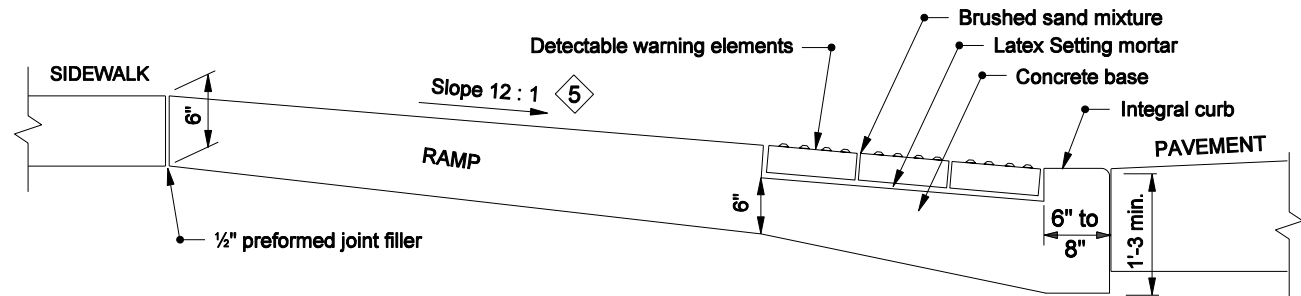
**TRUNCATED DOMES USED
IN DETECTABLE WARNINGS**



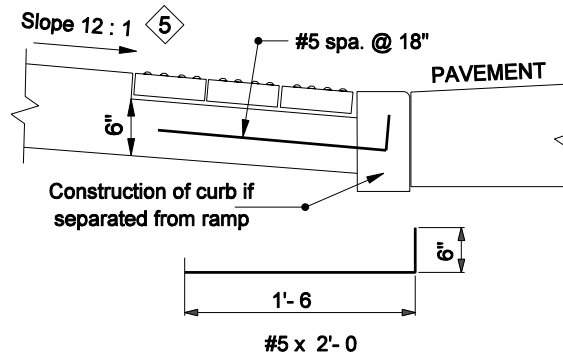
CHANGE OF GRADE



DETAIL OF RAMP GROOVES



RAMP AND BRICK SURFACE CONSTRUCTION DETAIL



ALTERNATE CURB CONSTRUCTION

INDIANA DEPARTMENT OF TRANSPORTATION

SIDEWALK CURB RAMPS
GENERAL NOTES & DETAILS

11/01/04