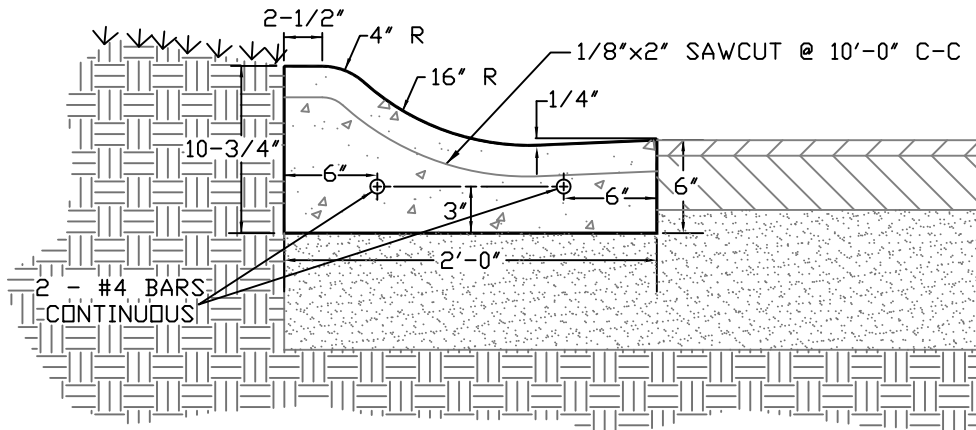


CITY OF ANGOLA

CONCRETE CURB & GUTTER STANDARDS

NOTE: ALL CONCRETE MUST BE INDOT CLASS A (4000 PSI CONCRETE)

1/2" PREFORMED EXPANSION JOINT REQUIRED AT THE BEGINNING AND END OF ALL RADII AND CURVES WITH SPACING ON STRAIGHT-AWAYS AND LONG CURVES NOT TO EXCEED 200 FEET.



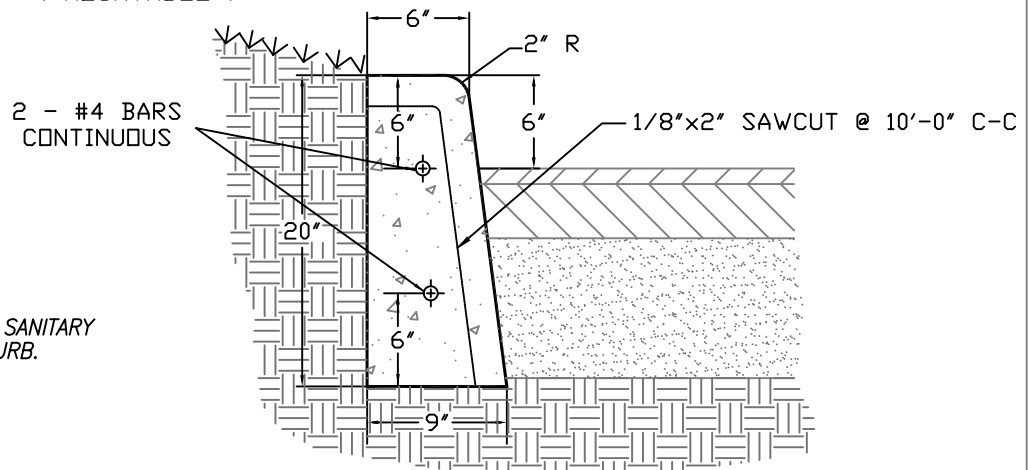
COMBINED CURB & GUTTER

NTS
(MOUNTABLE)

NOTE:

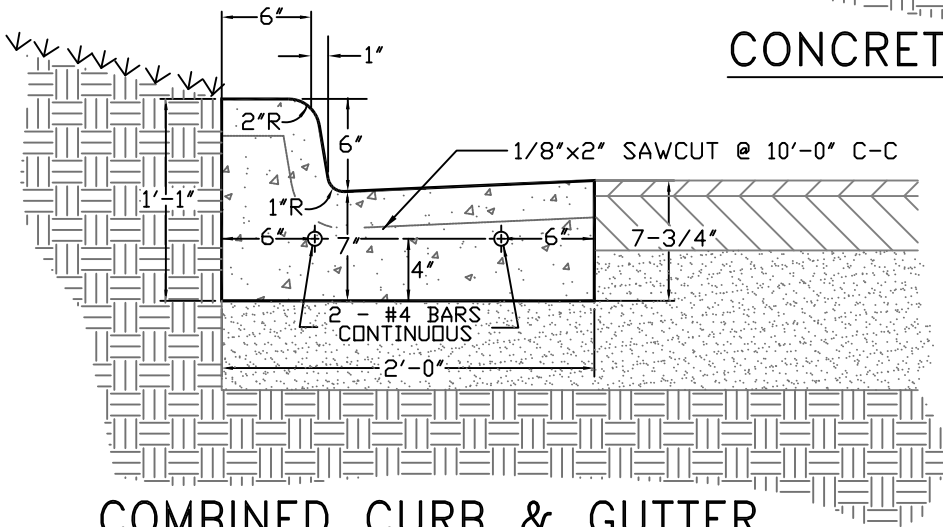
TOP OF CURB TO BE STAMPED "W"
OPPOSITE THE CURB VALVE BOX.

TOP OF CURB TO BE STAMPED "S"
AT ALL LOCATIONS ABOVE WHERE A SANITARY
SEWER LATERAL CROSSES UNDER CURB.



CONCRETE CURB DETAIL

(BARRIER)
NTS



COMBINED CURB & GUTTER

(BARRIER)
NTS